

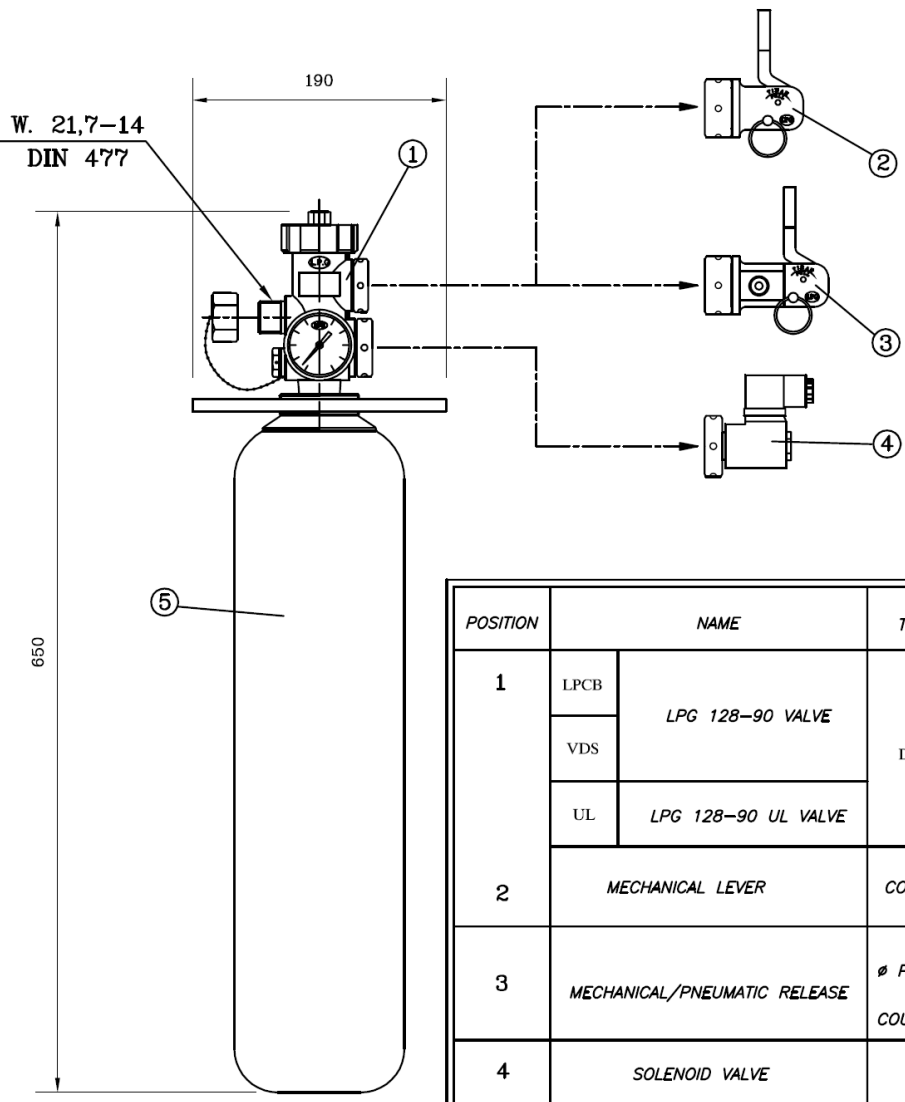


# 3L PILOT CYLINDER DATA SHEET

DONE BY	ALBERT	11/04
CHECKED BY		10/09
APPROVED BY		10/09

DATA SHEET Nr. 052 REV. 03 DATE 10/09

**INTRODUCTION** High pressure Pilot Cylinder (HTP 4351 psi) used to open auxiliary cylinders in centralised fire-extinguishing systems. Can be actuated manually, pneumatically or electrically.



POSITION	NAME		THREADS	TECHNICAL CHARACTERISTICS
1	LPCB	LPG 128-90 VALVE	W28.8 DIN 477	PPH: 300 bar. HTP: 4351 psi.
	VDS			
	UL			
2	MECHANICAL LEVER		COUPLING THREAD TO VALVE: M. 30x1.5	
3	MECHANICAL/PNEUMATIC RELEASE		∅ PNEUMATIC COUPLING:	G. 1/8"
			COUPLING THREAD TO VALVE:	M. 30x1.5
4	SOLENOID VALVE		24V. - 0.41A.	

5	CAPACITY	∅	WORKING PRESSURE
	3 l. 0.15 ft. <sup>3</sup>	100mm 4 in	150 bar. 2175 psi. <b>NITROGEN</b>

**IMPORTANT**  
 LPG Fire reserves the right to change or modify without prior notice any data or specifications due to changes or modifications made in order to improve the products presented.  
 This data sheet details the standards and requirements of LPG Fire. It is for informational purposes only and the data contained within is approximate and presented without legal guarantee or warranty.  
 The observation or use of this document doesn't exclude the obligation to comply with existing local standards and authorities at all times. For maintenance and installations please refer to the manual supplied with the product.

**Contact Us:**  
 LPG Fire Australia  
 8/30 Mudgeeraba Rd  
 Worongary  
 QLD 4213 AUSTRALIA  
 Phone: +61 7 5559 0634  
 Fax: +61 7 5559 0201  
 Email: info@lpgfire.com.au  
 Web: www.lpgfire.com.au